



## CHARING & DISTRICT LOCAL HISTORY SOCIETY

[www.charinghistory.co.uk](http://www.charinghistory.co.uk)

### CDLHS In Our Historic Times

edition 5, June 12th 2020

Stay Alert!

#### Contents

##### Current

Committee update p 2

##### Looking Back

Our e talk p 2

Quiz answers p 10

Looking Forward to our next e talk p 2

##### Continuing our series

1970, it was 50 years ago p 3, p 4

People of Charing; Marjorie Machin p 8-9

##### Feature

Peter Dolman, Mapmaker, Artist, Teacher p 5 - 7

##### Light-hearted

Jokes p 9

Quiz p 7

Quiz issue 2 answers p 10

##### General

A plea p 10

Charlie the Snake p 11

Noticeboard p 12

Hello! Welcome back to the standard format of our 'CDLHS In Historic Times' newsletters, with another miscellany of information and a variety of articles for you to browse, and hopefully enjoy.

Thank you for all the feedback, and thank you to all who've contributed, and who have helped make this happen.

We'd love to have your personal memories for our archive, either as part of our 'Charing Stories' project for future generations to learn about life in Charing in the 21st century, or for our 'Experiences of life in WW2' project.

Please contact [newsletter@charinghistory.co.uk](mailto:newsletter@charinghistory.co.uk)

Valerie



## Committee News

- Tina Winterbottom was our Membership Secretary this year, but with her other commitments, has decided to stand down. Thank you Tina for all your help.

- For the moment, Sylvia Beck is taking this over, and combining it with her Secretarial role.

### Talks

- Our Talks are organised 6 - 9 months ahead, so although Celia Jennings is now responsible for arranging these for the 2020/21 year, Sheila Neil set up this year's programme, which was once again, really excellent - Thank you Sheila.

- Sheila has now decided to step down from the Committee, & from organising outings. We all owe you a huge 'Thank You' for all that you've done for CDLHS, & for being on the Committee for the past 8 years.

### .Committee

- Dorothy Burdick has been a Committee Member for over 20 years, & now feels it is time for a rest!

- During this time she has run the Photographic Group, & was the inspiration in formulating the project to transfer our photographic archive to digital format - to preserve them for the future.

- She helped with the research for a number of our publications, & was heavily involved with our 'Charing in the First World War' exhibition in 2014.

- Dorothy has always given very sound advice at Committee Meetings, & has been Vice-Chair for the past 4 years. We are extremely grateful for her considerable help & support over the past 20 years

*Keith Oram (Chair CDLHS)*

### Looking back to **The Story of the Railway to Charing (Part 2)** *by Steve Beck*

Steve brought us up to date. He included among other things: the importance of Charing's position en-route to Dover and so on to Dunkirk, the decline in staff to just one person for a few hours in the ticket office, and that there's now a more frequent train service to London (approximately twice as many as 1950.) As well as solving the puzzle of the shape on the platform canopy.

It included some interesting pictures from the CDLHS archive. (I particularly liked the 1930 picture of men returning to Charing on Armistice Day, there were so many on that trip!)

our next e-talk

### **Papermaking in Kent** *by Alan Witt*

Alan worked for 38 years for the Whatman company, considered the leader in the paper industry. He explains why Kent's topography enabled it to become the epicentre for papermaking, and why Whatman's papers were so special and valued by historic world leaders and artists alike.



*The drying loft at Springfield Mill, owned by the Whatman family.*

## Continuing our series.....

# 1970

## 50 years ago – Music Festivals

At the end of August 1970 the 3<sup>rd</sup> and last Isle of Wight festival was held, thought to be the largest of its era, surpassing Woodstock, with estimates varying between 500,000 – 700,000 attending. The line up included Jimi Hendrix, as well as Jethro Tull, The Who, Joan Baez, Joni Mitchell and many others



Jimi Hendrix  
1942 - 70

The next month marked the first Glastonbury Festival, then known as the Worthy Farm Pop Festival. This was overshadowed by the death, the day before, of Jimi Hendrix. Jimi had died in a hotel room in London at the age of 27. Sixteen days later on Oct 4<sup>th</sup> Janis Joplin was found dead in a hotel room in Los Angeles; also 27. Both probably accidental.

## It was 50 years ago today – well this year actually – music: the end of an era and the beginning of a new one

1970 was the year that the Beatles broke up. 50 years is probably too soon for some of us to get over that shock. Amid acrimony their final album 'Let it Be' was released in May, but Paul McCartney had already announced his departure. All four released solo albums that year, and Paul filed for dissolution of the band on 31<sup>st</sup> December.

Meanwhile, an upcoming Birmingham band called Black Sabbath, fronted by lead vocalist Ozzy Osbourne, released their first single, followed by an album in February. The album, also called Black Sabbath was critically panned but highly successful and its release is considered to mark the start of the Heavy Metal era.

The magazine Rolling Stone described the music: "discordant jams with bass and guitar reeling like velocitised speedfreaks all over each other's musical perimeters, yet never quite finding synch" (sic). They like it now.



*The Black Sabbath  
album cover*

*Continued on next page*

## 1970s jokes from Les Dawson

- I was playing piano. Someone shouted: "Get him off!" The manager shouted: "No, he's 'armless!" I heard somebody say: "That's what he ought to be."
- I'm so far behind with the mortgage repayments that the arrears are written in Latin.
- The people next door are awful. At three o'clock this morning they were banging on the walls and screaming. Good job, I wasn't trying to sleep — I was playing my drums at the time.
- My father drank so heavily, when he blew on the birthday cake he lit the candles.

## 1970 *continued*

### 50 years ago – what were you listening to?



The top selling album in 1970 was Simon & Garfunkel's *Bridge over Troubled Water*, which was also their last studio album. It sold 25 million copies worldwide and received many awards. Apart from the title track, which was also the 4<sup>th</sup> highest – selling single of that year, the album included *The Boxer*. Both these tracks were listed in *Rolling Stone's* 500 greatest songs of all time. Among the other tracks were *Bye Bye Love*, *Cecilia*, and *Baby Driver*. *But which one is running through your head right now?* As well as that, their *Greatest Hits* album

came in at number 4 that year.

*And Introducing:-* in case you are wondering the no 3 album was Mike Oldfield's *Tubular Bells*, and no 2 was Abba's *Greatest Hits*.

And if that hasn't got the **ear worms** going let's come to the singles. All summer we were listening to Mungo Jerry – *In the Summertime*. It stayed at no 1 for 7 weeks and is one of the best-selling singles of all time. It took Elvis Presley's *The Wonder of You* (aah!) to knock it off the top slot in August. At the age of 74 lead singer Ray Dorset is still gigging, although maybe he's having a bit of a break at the moment.

A little earlier a song called *Back Home* had occupied that slot for three weeks in May. The singers? The England World Cup Squad.

Oh, was there a World Cup that year? Well maybe if you're good, or even if you're not, that will come up in a later edition.



*Ray Dorset,  
aka Mungo Jerry  
(the name was taken from Mungojerrie,  
one of TS Eliot's Jellicle cats)*

*Kate McIver*



### Take a closer look ....

In a previous issue, Kate mentioned the 1970 election in which Edward Heath was unexpectedly elected Prime Minister.

For his newspaper cartoon contribution, on the day of the election, cartoonist Les Gibberd had gone with the predictions, and accordingly drawn Harold Wilson as a 'jack-in-a-box,' popping out of the ballot box.

When it was clear that Edward Heath had in fact won, he overdrew Edward Heath's head on the top of Harold Wilson's.

*Valerie Yeeles*



# Peter Holman

## Mapmaker, Artist, Teacher

H. E. White - June 2020



### A brief history of the map and artist.

Charing and District Local History Society (CDLHS) took possession of the illustrated map of the Ashford area, created by resident artist and teacher Peter Holman in the 1960's, as a donation from local resident who had known and grown up with the Holman family in Charing during that era. As a fund-raising initiative to preserve historical artefacts in the Society's possession a tea-towel was produced in 2020, to honour the unique artwork.

Peter and Biddy Holman with their three children arrived in Charing in 1960 and left the village in 1971 for Yorkshire, later settling in Aylsham in Norfolk where I was able to trace the family via the Quakers there. The oldest son, Tim Holman, has been proud to support the reproduction of his father's work in the form of a tea towel. He also provided memories of his childhood in Charing during the 'Swinging Sixties' which he recalls 'in rose-tinted, almost idyllic terms'. (*This information is based on his reminiscences and those of Aylsham Quaker Meeting*)

### The Map

The original map featuring Ashford and the surrounding villages, places of interest and some quirky historical facts, was drawn in pen and ink and then went off to the printers in Ashford. The coloured editions were filled in by hand with coloured inks. They were produced in some numbers and in several editions. There may be others lurking in attics and cupboards or even still hanging on walls in properties around the district.

The maps were offered for sale at different prices according to whether they were uncoloured, coloured or framed. The one reproduced as a tea towel, was inherited by CDLHS from the Ball family may be an original draft or first edition as the compass rose has east and west transposed. This inadvertent but distinguishing error was put right subsequently.

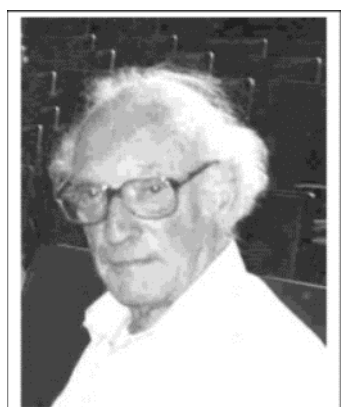


## Peter Holman

### Mapmaker, Artist, Teacher *continued*

#### A brief history of the map and artist.

The earliest editions were most likely produced while the family were living at 37 The Moat. In 1967 they moved to a bigger house on Burleigh Road, 'Northways'. Peter had a studio in what had probably been the housemaid's room at the top of the backstairs; one may imagine him there, working on his paintings, maps and designs. When they moved in, the house still had the system of bell-pulls in each of the main rooms and a row of labelled bells hanging at the back of the hall. There was also an Anderson shelter in situ just outside the garden door and a separate loo for staff use in one of the outhouses which was still plumbed in at that time



#### Biography

Peter Thomas Donald Holman was born at Hurstpierpoint, Sussex in 1923. His father had inherited a small farm, but by 1926 the family moved to North Yorkshire where Peter attended the Harrogate Art School for two years. He then joined the Navy and after being demobbed spent the next three years at Leeds Art School which he left with an Art Teacher's Diploma and the NDD, which was the art diploma of the time. A few years later he met Biddy, they married in 1954 and soon after they both joined the Society of Friends.

Five years later, then with two sons, they moved first to Bearstead, Maidstone and then to Charing where a third son was born. By this time Peter had become the Head of the Art Department at the newly opened Duncan Bowen Secondary Modern School in Ashford, part of the town's response to the large number of people being encouraged to move out of crowded parts of London into the surrounding counties, referred to as London overspill. The school grew rapidly from 250 pupils to 1000 so in addition to running the Art Department Peter became head of one of the houses in the school.

At this time Peter's passion for local history and geography together with his growing collection of Ordnance Survey maps, developed into cartography, calligraphy and the making of pictorial maps. He found that selling his maps locally also produced some extra earnings, as in the 1960s teachers' salaries were never generous – especially when you had 3 boys to bring up.

While living in Charing Peter also produced other artwork notably the programme for the 'Tudor May Fayre' of 1967, that was held to raise funds for the new village playing field. He designed the back cover map for the programme priced at just 'Half a Crown'. He also made a specially illustrated certificate of attendance for his family.

Peter was a keen member of CDLHS, their records show he was involved with the oral history project called 'Charing and its Changing' in which tape-recorded interviews were made (now transcribed) with older inhabitants of the village about life in the years before the First World War.



## Peter Holman

### Mapmaker, Artist, Teacher *continued*

By 1971 Peter as Art Head was ready to move on, firstly to the Friends' School at Great Ayton then to Leven Hall where he eventually retired from teaching in 1982. Afterwards the family moved to Wensleydale where Peter with his interest in drawing and maps produced 'Prospects of Wensleydale' a series of maps which described the views up and down the dale where they lived.

In 1984 the family moved to Norwich and for two years he was the warden of the Goat Lane Meeting House. After his second retirement he and Bidy moved to Aylsham and in 1987 Peter joined the Aylsham Local History Society where he was chairman and vice chairman for fourteen years. Among his achievements there were more maps, two books and some popular mystery tours!

He died on Wednesday 4th June 2008, aged 85, and was interred in the Quaker Burial Ground at the Gildencroft in Norwich on Friday 13th June 2008.

**A tea-towel was produced in 2020 to honour the unique artwork of Peter Holman**



### Mini Quiz on Map

1. Where was the rebel Jack Cade reputedly found and Killed?
2. Who was the author of 'Cricket on the Green: For club and Village Cricketers and for Boys'?
3. What was the cause of the strange subterranean fires near Hinxhill in 1727 and 1836?
4. 'Here lived a poet laureate' - near Hothfield - Who was he?
5. Where is the last Plantagenet heir reputedly buried?

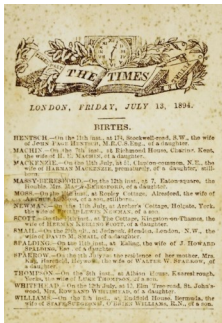
Hilary White

To buy a tea towel: please contact [chairman@charinghistory.co.uk](mailto:chairman@charinghistory.co.uk) They are £8 each

# People of Charing

## Marjorie Machin

1894 – 1978



One of the cards sent to announce the birth of Marjorie Machin, using a copy of the original newspaper article.

Marjorie Machin was a well-known figure in Charing through most of the twentieth century, born in, and living in, Richmond House (45 High St, next to Wady & Brett) until just a few months before her death, when ill health forced her to move to Clearmount nursing home. In WW1 she served as a nurse, and in WW2 she served as a Commander in the ATS, then she also became a member of the Home Guard from 1952 -56. At home, she was an active member of the Charing Players for many years, and involved herself in many village activities.



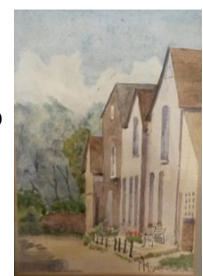
On the steps of Richmond House

One Charing resident remembers that one year, in the 1970s, when the bunting, flags and tables for the village fete were being prepared, it suddenly poured with rain and pelted down for the whole morning. Whilst the organisers were sheltering from the rain and thinking they'd have to cancel the fete, Miss Machin arrived and began to organise her stall. Despite the dreadful weather, she continued to patiently arrange the items for her stall. She was the only one in the field, going ahead. And she was right to do so. Just at the point of cancellation, the sun came out. Everything dried out; the flags round the field no longer looked bedraggled, but fluttered once more. The fete went on to be a success.

Throughout her life she carried the secret of a famous admirer. A Sunday Times newspaper article revealed that the poet and novelist Robert Graves (who wrote *I, Claudius*) had met Marjorie in a Red Cross hospital in Oxford where she was nursing during WW1.



Graves had been severely wounded in France. Letters to a friend reveal that he had been in love with her. She appears to have been fond of Graves, but had a fiancé serving in France, so could not reciprocate his feelings. Several of his poems are now understood to have been inspired by her. Sadly, her fiancé did not return, and Marjorie went home to Charing.



A few years ago, another Charing resident recalled that Miss Machin sitting in her bay window, painting the scene, was a familiar sight. Also that she was often to be seen with her pet parrot on her shoulder. That resident bought a watercolour of a Charing scene from a 'junk shop' in a nearby village. When the frame was removed 'MM' could be seen on the back, and when a number of parrot seeds fell out, it confirmed her belief that Marjorie Machin had painted it.

After hearing this story, a CDLHS committee member looked more closely at a watercolour of her own house in Charing (left by previous owner, 30 years before) and saw 'MM' at the bottom. It's likely that this, too had been painted by Marjorie Machin.



*continued*

## Marjorie Machin 1894 – 1978



Marjorie was inseparable from her car, a dark blue 1927 Austin 12, in fact she said it was like a brother to her. It was bought for her in 1928 by her father, Harry, for £140, and was loved and cherished until she had to part with it in 1978 to pay for the nursing home fees at Clearmount.

She named the car 'Alfred' after driving in it past 'Swingate Manor,' the poet laureate, Alfred Austin's house.

It had a top speed of 50 mph and fuel consumption of 25mpg. The head of Sotheby's vintage motor dept said 'acceleration is not his strong point'. In their auction notes Sotheby's commented:

"Prospective owners should note that terms of endearment should not be addressed to the car in the feminine gender. Ever since it was driven past the home of the former poet laureate, Alfred Austin in Great Chart, it has answered only to the name of Alfred."

They were thought to have done 200,000 miles together, and she said it only gave her problems during the war when she had difficulty finding petrol for it. For 30 years it was lovingly cared for by Ralph Blake of Charing Motors, and she would not allow anyone else to work on it; once even sending for him to go from Charing up to London to see to it.

Both Marjorie and Alfred were well known in Charing; a pair of indomitable veterans.



*Kate McIver, Valerie Yeeles  
Photos: CDLHS archive via Steve Beck*

## Humour or Groan time?



Q Why does history keep repeating itself?

A Because we weren't listening the first time!

\_\_\_\_\_

"I'm learning ancient history."

"So am I!"

"Let's go for a walk and talk over old times!"

## Answers to quiz from Issue 2 'Not Going Out'

A.



**Q. Who was this? and Where was this?**

**A.** Thought to be Queen Victoria on the lake at Eastwell; the man with the stick behind the sledge chair is probably her personal attendant John Brown. It is said Queen Victoria liked to be pushed on a sledge chair over the frozen lake when she visited her son, Prince Alfred, Duke of Edinburgh, who lived at Eastwell from 1874 to 1893.

B.



*The words engraved are:  
"Reputed to be the tomb  
of Richard Plantagenet  
22 December 1660"*

**Q. Which historic figure did an Ashford Borough Councillor wish to find out about, when he approached the University of Leicester for DNA help? And Q Who might this have been?**

**A** Richard of Eastwell, or Richard Plantagenet.

When the body of Richard III was identified, through his DNA, buried under a Leicester carpark, the ABC councillor wished to use the DNA to establish if the Richard Plantagenet apparently buried in Eastwell churchyard, was a blood relative of Richard III. (For various reasons, it was decided, however, not to disturb the churchyard).



Doing this would not have identified which blood relative, it might have been however. Was it his illegitimate son, or his nephew, Richard of Shrewsbury, Duke of York; the younger son of Edward IV and Elizabeth Woodville?

To find out more about Duke of York younger son of Edward IV, one of 'Princes in the Tower', go to:

<https://nerdalicious.com.au/books/could-richard-iiis-dna-help-solve-the-mystery-of-the-princes-in-the-tower/>

[https://en.wikipedia.org/wiki/Richard\\_of\\_Shrewsbury,\\_Duke\\_of\\_York](https://en.wikipedia.org/wiki/Richard_of_Shrewsbury,_Duke_of_York)

## The Present is the History of the Future

**Help us capture it, so our descendants will know how it really is for us now.**

The terminology 'social distancing', 'furlough', 'PPE', 'contact tracing', 'herd immunity', the 'R' number, 'modelling' are words and phrases we have all, within months, become familiar. These words will be part of a glossary for future researchers of history and Covid 19. Living through this period, we have not only acquired some new vocabulary, but adapted, somehow, to radical changes in our lives. Newspapers and social media are so crammed with statistics, information, projections, possibilities and reaction that it's hard to avoid. Scenes of quiet and empty streets, people in face masks and well spaced queues outside shops, are just some of what's now termed 'the new normal'. CDLHS wish to document our lives in this period for posterity. Please email, or jot down your thoughts and responses to it all, and send to me at [newsletter@charinghistory.co.uk](mailto:newsletter@charinghistory.co.uk).

CDLHS are also beginning to collect examples of the scenes and signs in Charing to make a lasting record. Sylvia and Steve Beck are setting up a digital folder and invite you to send your photographs of 'how you've spent spring and early summer in 2020 to add to this. Please send photos direct to Sylvia, at [Hon.Secretary@charinghistory.co.uk](mailto:Hon.Secretary@charinghistory.co.uk)

Valerie

# Making History

## Charing's Charlie the Snake In the Sundial Garden, Market Place 2020



**Have you come to say hello to Charlie the Charing Snake?**

We are trying to make Charlie as long as we can by adding painted stones to his body - please join in!

Please also respect the work that people have done, by not moving or removing any of the stones - Charlie is here to bring us all some pleasure in these difficult times 🍌

Thankssssssssss 🍌



It gives me huge pleasure to say  
That our Charlie Snake's here to stay!  
The Parish Council report  
They are pleased to support  
Keeping him in a permanent way  
So if you, or a parent or friend  
Want to add to our Charlie's rear end  
Then please pay him a visit  
As there's a time limit  
By 30th of June to attend.  
As after that time he will be  
Preserved for all eternity  
And our lovely reptile  
At the village sundial  
Will be part of Charing's history.

*Poem posted on 'Charing Chatter'  
Facebook pg. by Stephanie Moss  
09/06/2020*

From a small beginning, a simple, but inspired idea has caught the imagination: enabling young and old to come together in creative endeavour. This pebble snake represents the importance of each individual's contribution to the whole, a metaphor for each person's contribution and responsibility in this pandemic. It will now become a lasting testament of one of Charing's responses to Covid 19. Thank you the initiators, all contributors and the CPC!

Please note: **stones need to be added by June 30th.**

*Photos from Kate and Charing Chatter*



# Noticeboard

## Interesting websites

Harold Trill has some of his Charing videos on YouTube! Go to  
<https://www.youtube.com/channel/UCfJyJ8LDhy2FN0oWKMQ4G5Q>

or, search for HAT INVICTA PRODUCTIONS

\*\*\*\*\*

Smarden Heritage Centre has its own YouTube channel,  
<https://www.youtube.com/channel/UCGLSnT8fL7-IQd6hqOShLQA>

\*\*\*\*\*

If interested in cartoons reflecting life during the Coronavirus pandemic,  
an interesting compilation can be seen at;

<https://procartoonists.org/tag/dave-brown/>

\*\*\*\*\*

The British Association of Local History has some interesting information and links

<https://www.balh.org.uk/news>

British History Online notes, 'from 30 March, all transcribed content on BHO is now freely available to individual users, and will remain so until 31 July 2020'.

\*\*\*\*\*

To find out more about Duke of York younger son of Edward IV, one of 'Princes in the Tower',  
go to:

<https://nerdalicious.com.au/books/could-richard-iiis-dna-help-solve-the-mystery-of-the-princes-in-the-tower/>

[https://en.wikipedia.org/wiki/Richard\\_of\\_Shrewsbury,\\_Duke\\_of\\_York](https://en.wikipedia.org/wiki/Richard_of_Shrewsbury,_Duke_of_York)

Just in case you've forgotten ....

**Please, do join in with comments, ideas and corrections!**

**Write to : [newsletter@charinghistory.co.uk](mailto:newsletter@charinghistory.co.uk)**



We hold contact information of members, and interested people, to send them society news and information on local history. We do not share the information with third parties.

If you would rather not receive emails from us in future, please email

**[Hon.Secretary@charinghistory.co.uk](mailto:Hon.Secretary@charinghistory.co.uk)**